

# LSEG WORKSPACE

## Chart (CHT)

Chart combines real-time and historical pricing data with technical analysis, so you can compare data and gain deeper insight into investment performance. It covers a range of cross-asset instruments, including equities, indices, foreign exchange, fixed income, commodities, futures, and derivatives.



To access Chart, type **CHT** in the search bar and press **Enter**. The app displays your default instrument.

**Add instruments field** Type an instrument code or use the smart search tool and select from the auto-suggest

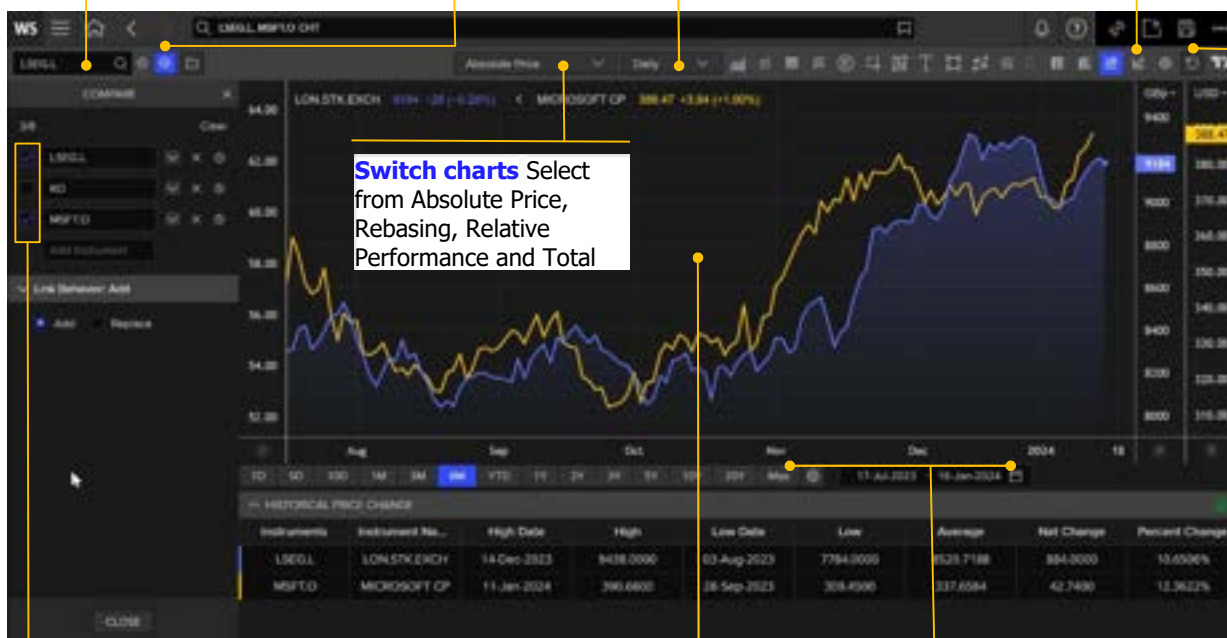
**Compare instruments** Open or hide Compare panel to add or remove

**Change the interval** Select a data interval.

**Export data** Export the chart to an Excel file or an image.

**Reset** Return the chart to the default view.

**Switch charts** Select from Absolute Price, Rebasing, Relative Performance and Total



**Select an instrument** Select the box beside the instrument to show its chart. Clear to hide the instrument.

**See data at a glance** Move your cursor across the chart to view closing prices for each day highlighted in the Y-axis.

**Adjust the focus period** Select preset periods (from 1D to Max) or choose the calendar icon to adjust the range.

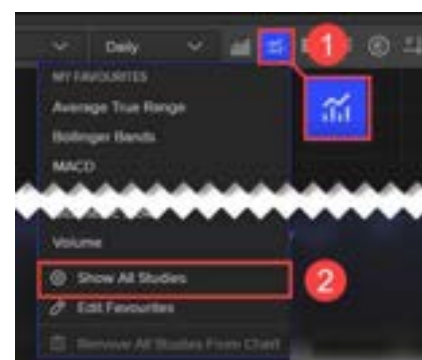
## Using tools

### Adding technical analyses

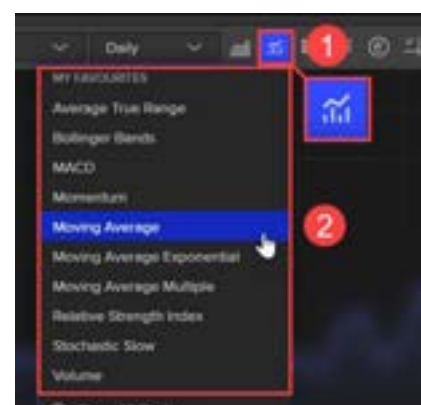
The Add Analysis tool lets you add multiple technical analyses to your chart. There are more than 100 technical studies to choose from.

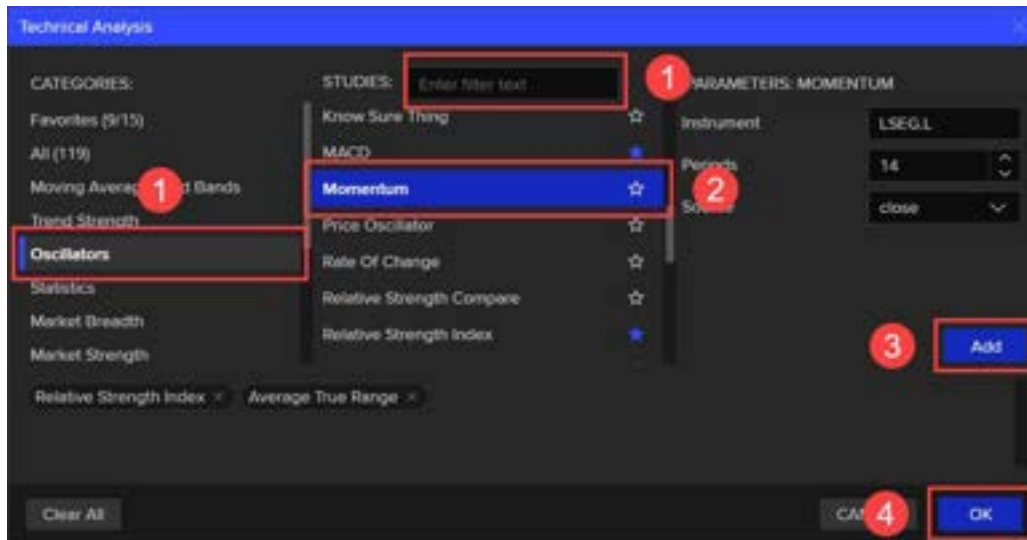
To select a study and add as a technical analysis to your chart:

1. Select the **Add Analysis** icon in the Chart toolbar.
2. Select the **Show All Studies** option. The Technical Analysis pop-up window opens.
3. Scroll down and select a category from the left-hand Categories column.
4. Scroll down and select a study from the center Studies column. You can also type a study name in the **Enter filter text** search field and select the option you want from the search results.
5. If necessary, configure the study parameters in the right-hand side Parameters column.
6. Click **Add**. The selected option displays in a pill below the Categories section.
7. Add more studies as desired, then click **OK**.



**Top Tip:** In the Technical Analysis pop-up window, select the Star icon beside a study to add it to the My Favorites list.





To add a favorited analysis to your chart:

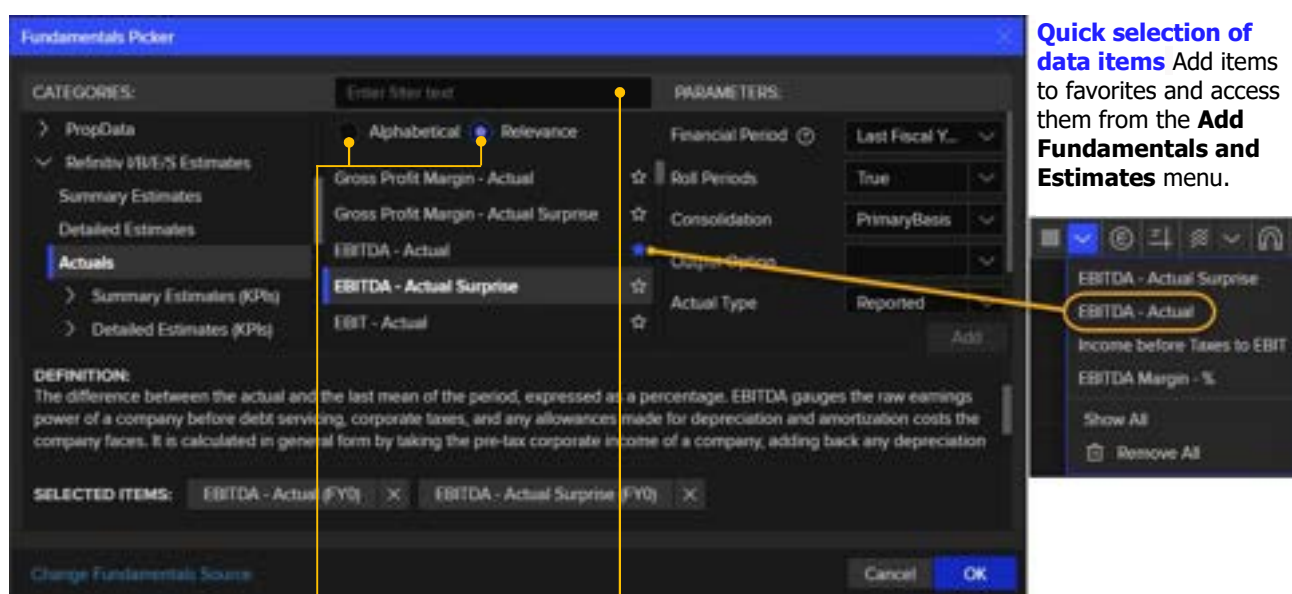
1. Select the **Add Analysis** icon in the Chart toolbar.
2. Select the required option from the My Favorites list in the menu. The analysis displays in your chart.

## Adding fundamentals and estimates

You can add fundamentals and estimates data, such as price and volume movement, company ownership, and index analytics, to charts.

To add the fundamentals and estimates data:

1. Select the **Add Fundamentals** icon in the Chart toolbar. The Fundamentals Picker pop-up window opens.
2. Scroll down and select a category from the left-hand Categories column.
3. Scroll down and select a data item from the center column. You can also type a data item name in the **Enter filter text** search field and select the option you want from the search results.
4. If necessary, configure the study parameters in the right-hand side Parameters column.
5. Click **Add**. The selected option displays in a pill below the Categories section.
6. Add more data items if you want, then click **OK**.



**Quick selection of data items** Add items to favorites and access them from the **Add Fundamentals and Estimates** menu.

**Sorting options** Apply **Alphabetical** or **Relevance** sorting to data items in the list.

**Searching for data items** Type a name of a data item in the **Enter filter text** box.

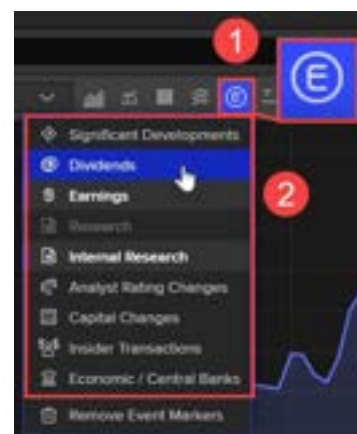
## Using event markers

You can gain insight into the drivers of price movements by overlaying company event markers. The following markers are available:

- Significant Developments
- Dividends
- Earnings
- Research
- Internal Research
- Analysis Rating Changes
- Capital Changes
- Insider Transactions
- Economic / Central Banks

To add event markers to your chart:

1. To open the list of the event markers, select the **Add Event Marker** icon in the Chart toolbar.
2. Select as many markers as you like. The event markers appear in your chart.



To remove event markers:

1. Select the **Add Event Marker** icon in the Chart toolbar.
2. Select **Remove Event Markers**. All event markers disappear from your chart

## Drawing tools

**Customize Trendlines** Select custom lines or shapes to add to your chart.

**Shapes** Choose different shapes to draw on your chart.



**Annotations** Choose annotations of different styles for your chart.



Read the **In-product help** section at the end of this guide to learn how to find the detailed instructions on using the drawing tools.

## Viewing related news



**News at Date** Click the icon to open the news panel.

**Event related news** Select a point on the chart for related news from that date.

**Open in News Monitor** Select to open related news in the News Monitor app.

**News filters** Select the options to filter the displayed news.

**Important news** Reuters editors and LSEG algorithms mark important items.

# Templates

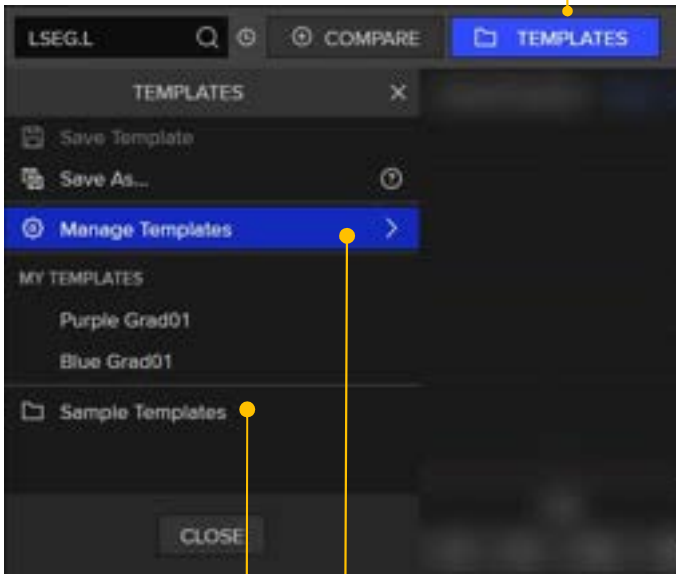
## Saving a template

You can save a chart as a template for easy access in the future. The template includes your custom settings.

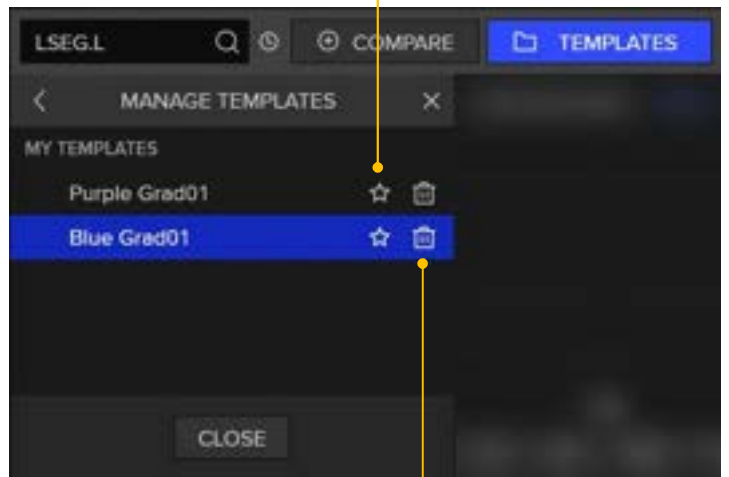
To save a chart as a template:

1. Go to the **Templates** dropdown in the Chart toolbar and select **Save As Template**.
2. Enter a name for your template in the dialog box and select **Save**.

**Templates** Click to open the Templates left-side panel and add, edit, delete, or choose templates.



**Set as Default** Select the **Star** icon to set a specific template as the default and load automatically every time a new chart instance is opened. Select again to



**Remove Template** Select the **Bin** icon to delete unwanted templates.

**Sample Templates** Select to open the Sample Template window. You can load system sample templates from there.

**Manage Templates** Select to open the Template Manager panel.

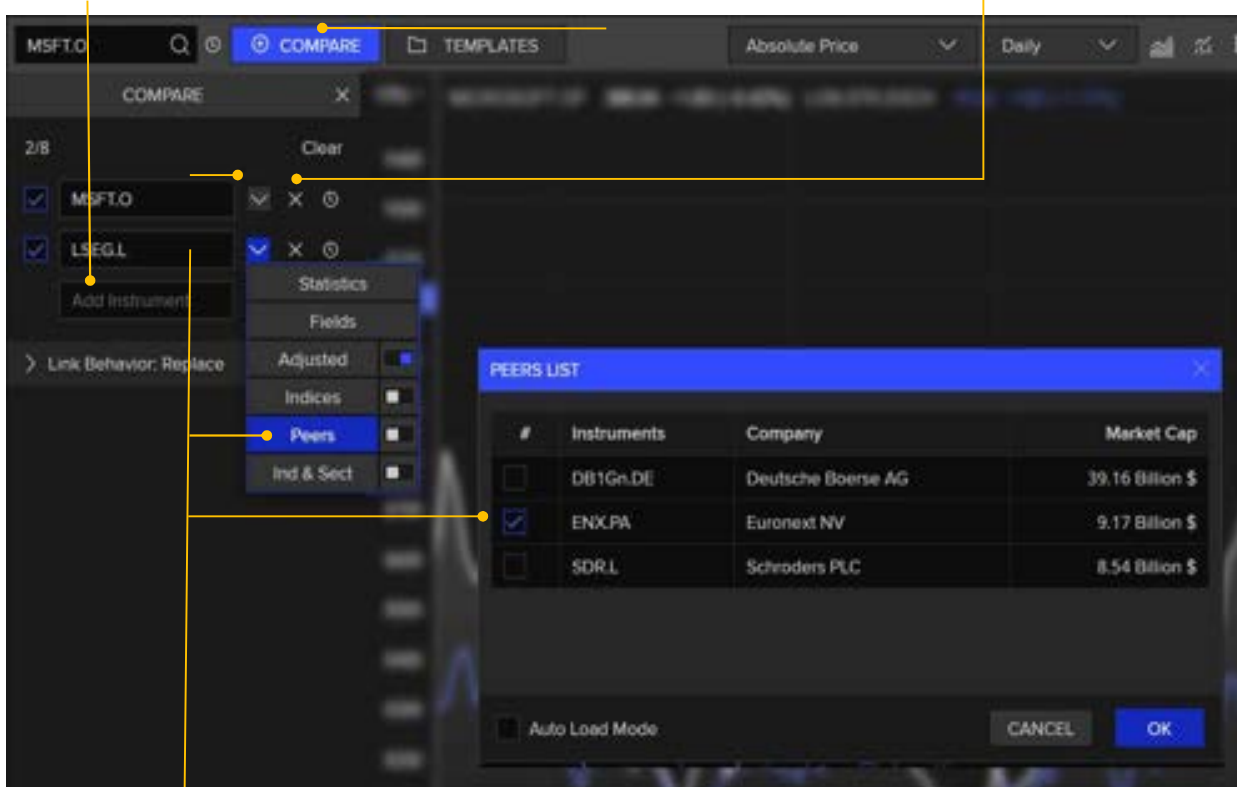
## Comparing data

In Chart, you can add multiple instruments to a single chart for easy comparison. You can add up to eight instruments to an Absolute Price chart, and up to 20 instruments to a Rebasing, Relative Performance and Total Return chart.

**Add an instrument** Type the code in the Add Instrument field or use our smart search tool and select from auto-suggest.

**Compare** Open the Compare panel and add, edit or delete instruments.

**Delete instrument** Select the icon to delete the instrument.

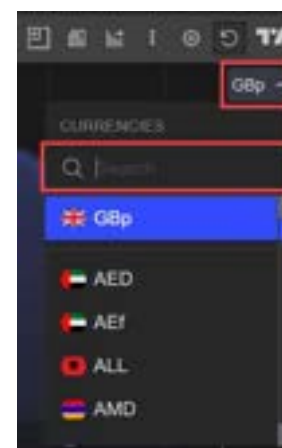


**Compare industry peers** Click the **dropdown menu arrow** for the instrument you want and select **Peers**. The Peers List window opens showing related companies. Select the options you want to chart then select **OK**. Compare related indices the same way.

## Converting currencies

You can convert the currency of an instrument in Absolute Price and Rebasing charts. To do this:

1. To open the **Currencies** dropdown menu, select the currencies field at the top of the Y-axis.
2. Select your preferred currency from the list. You can also enter the currency code in the **Search** field and select from the search results.



## Exporting data

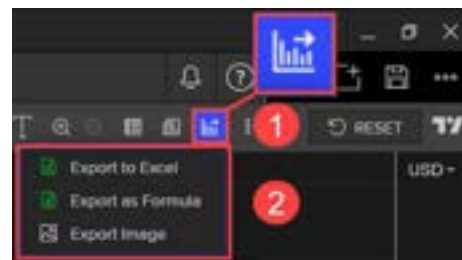
### Exporting to Excel

Workspace enables you to export chart data to Excel, as a chart, a formula, and an image. With this, you can perform further analysis or share the data.

To export a chart to Excel:

1. Click the **Export Chart** icon on the toolbar and select **Export to Excel**.
2. Enter a unique name for the file. You can choose to smooth the data where there are null values by selecting the **Treat Nulls with Previous** checkbox.
3. Click **OK** to save the file.

Excel opens on the exported file. The file is added to your local default downloads folder.



### Exporting as a formula

You can export a chart as a formula to Excel.

To export a chart as a formula:

1. Click the **Export Chart** icon and select **Export as Formula**. The Export Data window opens.
2. Type a name for the file in the Name field.
3. Select or clear the fields as you want.
4. Click **OK**.

Excel opens on the exported file. The file is added to your local default downloads folder.

### Exporting as an image

You can export a chart as an image in the following formats:

- PNG
- JPEG
- PDF

To export a chart as an image:

1. Click the **Export Chart** icon select **Export Image**.
2. Select the format for the image file and then click **OK**.

The file is added to your local default downloads folder.

# Help and support

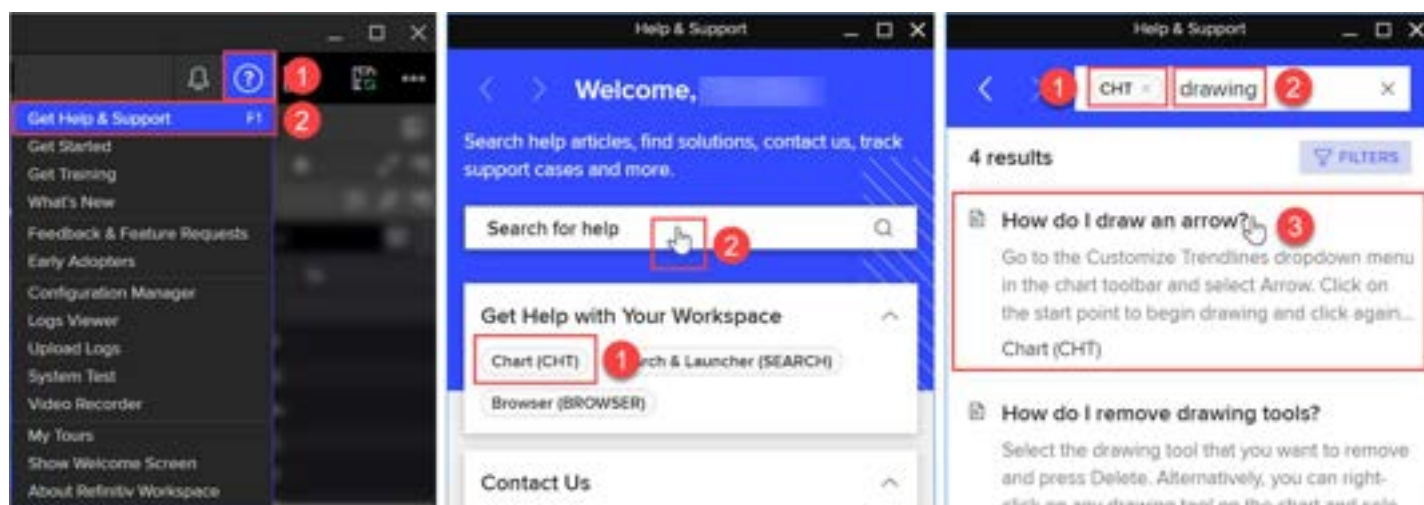
## In-product help

LSEG Workspace also has extensive in-product help that is available to all viewers.

1. Select the **Help (?)** icon in the top right corner.
2. Select **Get Help & Support** from the list. The Help & Support Welcome screen displays in a popup window.
3. If you have the Chart app open when you access the help, a Chart filter pill displays on the first screen. Click this to select the filter.
4. Click in the **Search for help** field. The Discover Help Topics screen displays and the filter displays as a pill in the search field. Articles filtered for Chart display in the results list.

**Note:** If you didn't select the front-page filter pill, type **CHT** in the search field and press **Tab**. This also creates the Chart filter.

5. Type keywords in the search field for the help you want, and press **Enter**. The results list displays all relevant Chart articles.
6. Click an article to open it.



## Need more help?

You can contact us directly through the Help & Support app via the **Contact Us** section. Find additional learning opportunities with the [LSEG Academy](#).